

SHADOW
THE PROFESSIONAL STANDARD



SHADOW **Heritage Heating**

01279 466500

www.shadowindustrial.co.uk

A MESSAGE FROM OUR CEO

Welcome to Shadow Industrial Infrared Heating – where innovation meets practicality and energy efficiency is our mission's cornerstone.

In heritage buildings, where preserving architectural integrity is as important as maintaining comfort, our infrared heaters offer an effective, unobtrusive solution. Designed by experienced engineers, each unit delivers reliable warmth while reducing energy use, helping to modernise heating without compromising the building's character.



Traditional heating systems often prove costly and inefficient, especially in heritage buildings where preserving the structure is paramount. With Shadow Heritage Infrared Heating, you can honour the past while embracing a future of cost-effective, sustainable warmth. Whether in historic halls or period properties, our heaters provide gentle, immediate heat that respects delicate interiors and eliminates cold drafts.

Designed for discreet, sympathetic installation, our solutions blend seamlessly into heritage environments, delivering reliable comfort without compromising character.

I invite you to join me in redefining heating for heritage spaces. Together, we can preserve history while setting new standards in efficiency and adaptability.

Warm regards,
Stephen Levy
Founder & CEO
Shadow Industrial Infrared Heating

Discover the versatility of Shadow Industrial heaters today. Contact us for a complimentary site evaluation or to submit images and drawings for a personalised quote:

Call: 01279 466 500
Email: info@shadowindustrial.co.uk

Elevate your space with Shadow Industrial – where every innovation serves your success.

CONTENTS

4 Shadow Heritage Heating

An Introduction into Shadow Heritage Heating
How Infrared Heating Works

6 Shadow Chandelier

An Introduction into Shadow Chandelier Heating
Technical Information
Additional information

10 Shadow Solace

An Introduction into Shadow Solace Heating
Technical Information

14 Shadow Carbon Heating Panels

An Introduction into Shadow Carbon Heating
Technical Information
Panel Size Calculator

18 Controllers

An Introduction into Shadow Controllers

19 Get In Touch

Get a Quote
Contact Information

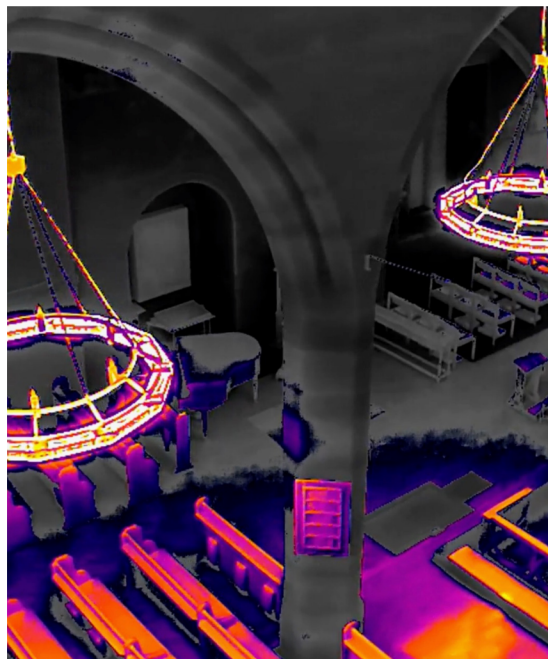
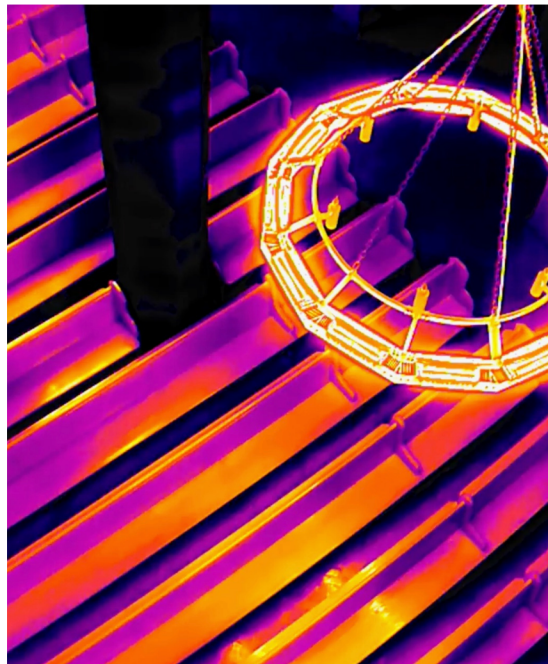
SHADOW HERITAGE HEATING

Temples, churches, mosques and other places of worship have highly specific heating requirements. One key consideration is that these spaces are often unoccupied for long periods throughout the day, making continuous heating both unnecessary and inefficient. Traditional heating systems work by warming the air, but in large buildings with high ceilings, this heat quickly rises and escapes into the upper spaces, resulting in significant energy waste.

Maintaining a consistently comfortable temperature using conventional methods can therefore be extremely challenging, costly and energy-inefficient. However, there is now a more effective, affordable and environmentally responsible alternative: **Ceramic Infrared Heating by Shadow**. These systems deliver targeted warmth at the touch of a button.

By dividing a religious space into heating 'zones', operating costs can be significantly reduced. For example, if a small congregation is seated near the front, only that area needs to be heated, eliminating the need to power up an entire central heating system hours in advance. Instead, gentle radiant warmth, similar to the sun's rays, can be delivered immediately via a simple switch.

Long-wave (zero light) infrared heaters are available in wall-mounted or ceiling-suspended formats. Among these, the acclaimed **Shadow Chandelier** and **Solace Heaters** combine architectural elegance with energy efficiency, to complement the aesthetic of treasured historic and heritage buildings.



Controllable

Smart zoning and controls for efficient use



Low Carbon Solution

Supports sustainability and reduced emissions



Targeted Heat

Direct positioning for enhanced comfort

How Long-Wave Infrared Heating Works

Long-wave infrared (LWIR) heating delivers gentle, radiant warmth that directly heats people, surfaces, and objects. As these surfaces absorb heat, they naturally warm the surrounding air, creating a comfortable environment throughout the space. This makes it particularly effective in large, draughty, or poorly insulated areas, which are common in heritage buildings.

Because the heat is targeted and steady, energy is not wasted on unused spaces, helping to reduce running costs. For heritage sites aiming to lower their environmental impact, LWIR provides a practical, low-energy solution that supports decarbonisation and moves them closer to net zero, without compromising the character of the building.



Energy Efficient

Lower energy consumption compared to traditional systems



Sympathetic Design

Elegant fittings designed to complement heritage architecture



Low Maintenance

Durable with minimal servicing requirements



SHADOW

SHADOW CHANDELIER

The Shadow Chandelier is a revolutionary infrared heating solution designed to meet the unique needs of heritage buildings, especially churches and other historic properties. Combining powerful heating capabilities with elegant design, the Shadow Chandelier ensures your space remains warm and inviting without compromising aesthetics or heritage preservation.

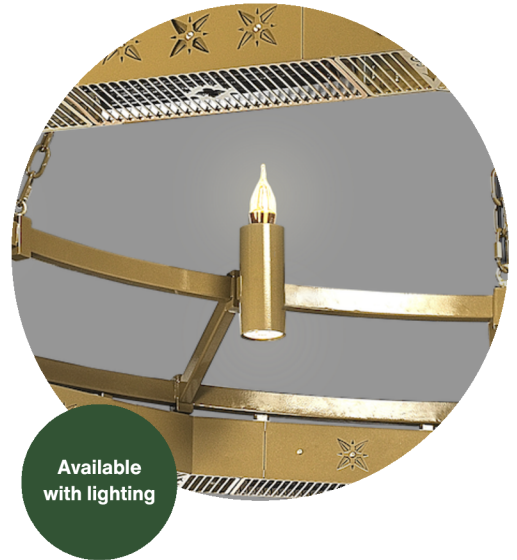
SHADOW CHANDELIER

Heating heritage spaces and churches presents unique challenges due to their size, architectural features and lack of modern insulation. Maintaining a comfortable environment for visitors and congregations is essential, however, traditional heating methods are inefficient and risk damaging historic materials.

The Shadow Chandelier is more than just a heater; it's a comprehensive zoned ECO heating solution for heritage buildings that has been designed to aesthetically compliment historic settings.

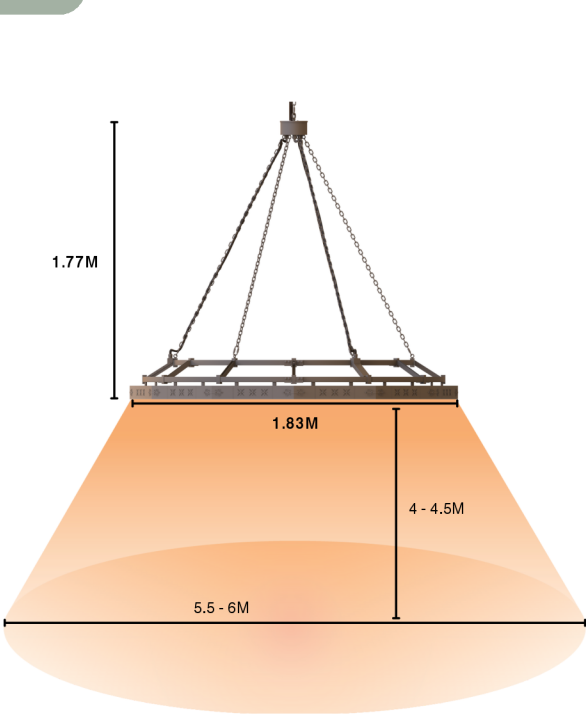
- 01 Efficient Heating Power:** 8.7kW or 9.6kW via long-wave ceramic emitters, heating areas of up to 40M² each. Ideal for large, draughty spaces.
- 02 Understated Elegance:** Finished in RAL1036 premium powder coat, the chandelier is designed for easy installation in historic interiors, with (optional) decorative candle lamps and dimmable downlights for customisable lighting.
- 03 Zero-Light Ceramic Technology:** Provides efficient warmth without visible light, preserving your space's visual ambience and historic charm.
- 04 Advanced Control:** Our Heritage Chandelier heaters are supplied with a control system for complete peace of mind. Advanced control via a wireless remote allows seamless adjustment, giving you both comfort and efficiency. By optimising when and where your heaters operate, running costs are minimised and energy use is massively reduced, supporting your journey towards net zero.
- 05 Flexible Power Options:** Available in single or 3-phase configurations, ensuring compatibility with various electrical setups.
- 06 Heritage-Friendly Heating:** Gentle infrared technology heats people, objects and the surrounding air, protecting delicate surfaces and artefacts in heritage spaces.



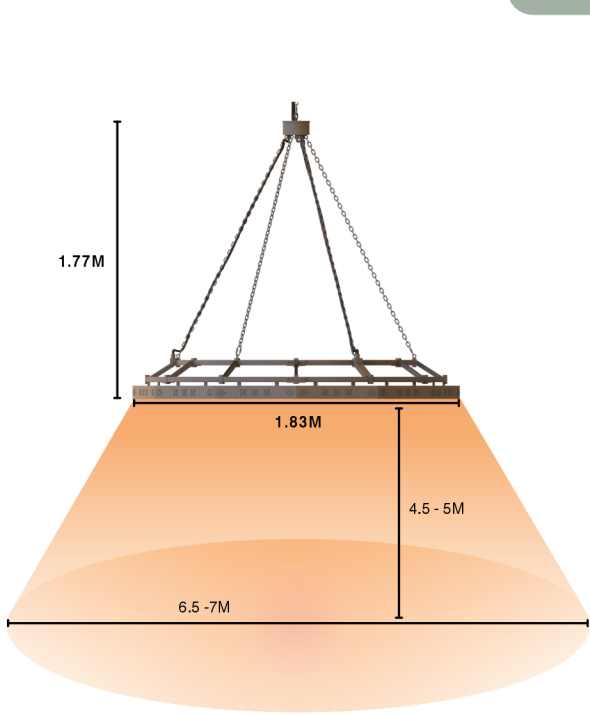


The Shadow Chandelier is available with or without integrated LED lighting, allowing you to choose the option that best suits your space. Whether you need discreet heating alone or a combined heat and light solution, the Shadow Chandelier offers the flexibility to meet both aesthetic and practical requirements.

8.7KW



9.6KW

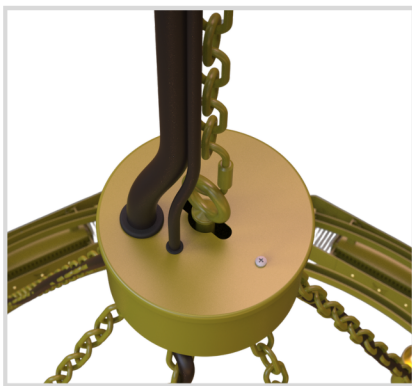


Note: The coverage area is a guide only and calculated for effective heating in the colder months. The areas given can be influenced by a number of additional factors. Heat is subjective and different people feel warm at different heat levels. The mounting height will affect the maximum heat level felt at ground level, as well as the heat spread.

| Dimension (H) mm | Dimension (W) mm | Coverage (M sq.) | Phase Supply | Emitters | Total Power (kW) | Voltage (V) | Rec. height from floor (m) | Min. Distance from side wall (mm) | Weight (kg) |
|------------------|------------------|------------------|--------------------|----------|------------------|-------------|----------------------------|-----------------------------------|-------------|
| 1770 | 1830 | 29 - 34 | Single and 3 Phase | 12 | 8.7 | 240 | 4 - 4.5 | 750 | 49 |
| 1770 | 1830 | 38 - 42 | Single and 3 Phase | 12 | 9.6 | 240 | 4.5 - 5 | 750 | 49 |

8.7KW

9.6KW



Central Mounting Data

- Central hanging point
- 49kg total weight
- Additional chain available

It is essential that suitable mounting points are tested (load) to ensure they are suitable for the weight and strengthened if necessary with bracing or other means before installation.

The Shadow Chandelier is designed not only to provide effective infrared heating but also to complement the aesthetic of your space with optional integrated lighting features.

Decorative Uplighting (Lamps supplied)

Each chandelier features a ring of decorative lights at the top, creating a warm ambient glow that highlights architectural character without overpowering the space, ideal for heritage settings.

Customisable Downlighting (Lamps not supplied)

Six GU10 downlighters sit beneath the chandelier, giving you full flexibility to choose the most suitable LED lamps for your space. Options include:

- Colour temperature: 2700K (warm) to 6000K (cool)
- Brightness: 2W–10W (25W–100W equivalent)
- Dimmable or smart-control
- Varied beam angles

This flexibility allows you to tailor both ambience and functionality, whether for general lighting, task use or enhancing listed and historic buildings. Our team can advise on lamp compatibility and installation if required.

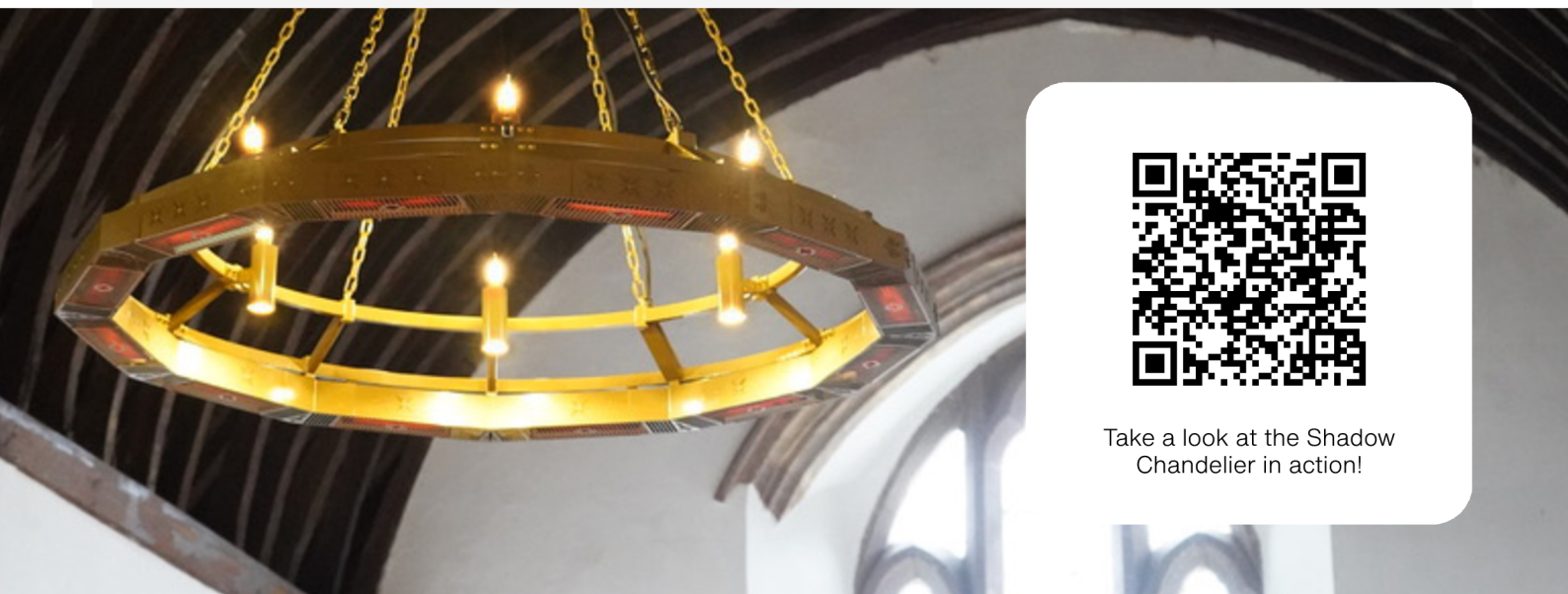


The heating is certainly as good as we hoped for and even better!

Holly, Buildings Project Manager Dioceses of Portsmouth



Take a look at the Shadow Chandelier in action!



The background image is a photograph of a church interior. It features a high, vaulted ceiling with dark wooden beams. Large, light-colored stone columns support the structure. On the left, there are tall, narrow windows with intricate tracery. In the distance, a balcony with an organ is visible. The floor is made of light-colored wood in a herringbone pattern. The overall atmosphere is one of historical grandeur and architectural detail.

SHADOW

SHADOW SOLACE

The Shadow Solace provides gentle, radiant warmth that creates lasting comfort without blasting hot air. Its slim, elegant design in black or gold blends seamlessly into any space, while flexible installation - single, paired, or triple - offers discreet heating perfectly suited to both modern and heritage settings.

SHADOW SOLACE

The Shadow Solace brings together the Chandelier's timeless elegance with the versatility of a modular, linear format. Using the same advanced long-wave infrared technology, it delivers gentle, comfortable heat with minimal warm-up time and very little energy waste, providing an efficient and sustainable solution for sensitive interiors.

Its thoughtful design allows it to blend naturally into both heritage and contemporary spaces, complementing architectural features while providing a striking visual presence. The modular build can be configured to suit the size and layout of any space, making it ideal for both smaller, intimate areas and larger, more complex interiors.

With multiple mounting options, the Solace can be positioned to deliver heat exactly where it's needed, whether wall mounted or suspended from above. Its adaptability ensures consistent warmth while maintaining the visual integrity of the space.

Perfect for historic halls, period buildings and spaces with architectural character, the Shadow Solace brings warmth, comfort and presence to interiors that demand both performance and style.





Product Code: 902301

Shadow Solace 16

Dimensions (mm):
130 x 750 x 120

Total Power (kW):
1.6

Voltage (V):
220-240V

Weight (kg):
5.5

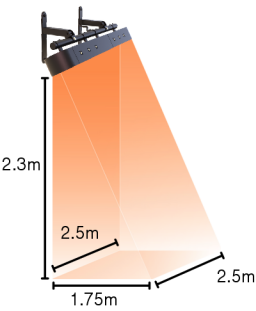
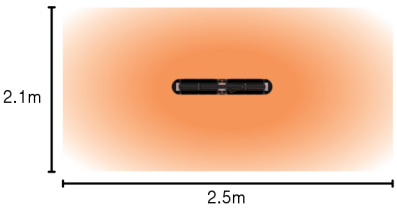
Warranty (years):
5

Ingress Protection:
IP45



Product Code: 902300

Heat Map



Product Code: 902303

Shadow Solace 24

Dimensions (mm):
130 x 1095 x 120

Total Power (kW):
2.4

Voltage (V):
220-240V

Weight (kg):
8.05

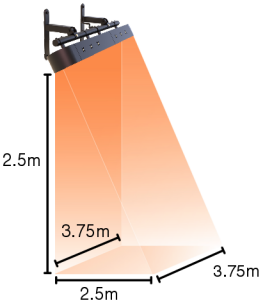
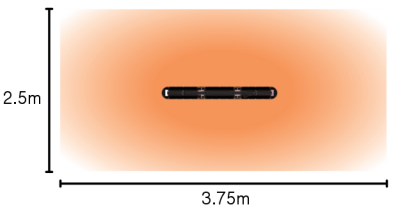
Warranty (years):
5

Ingress Protection:
IP45



Product Code: 902302

Heat Map





Product Code: 902303D

Shadow Solace 24 - Double

Dimensions (mm):
220 x 1095 x 400

Weight (kg):
16.65

Total Power (kW):
4.8

Warranty (years):
5

Voltage (V):
220-240V

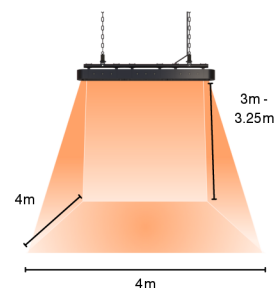
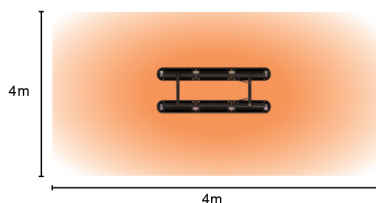
Ingress Protection:
IP45

Please Note: Double and Triple configurations cannot be wall mounted



Product Code: 902302D

Heat Map



Product Code: 902303T

Shadow Solace 24 - Triple

Dimensions (mm):
220 x 1095 x 680

Weight (kg):
25.1

Total Power (kW):
7.2

Warranty (years):
5

Voltage (V):
220-240V

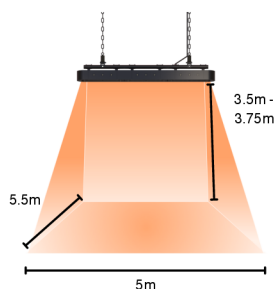
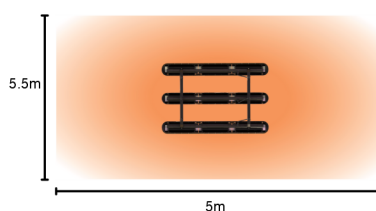
Ingress Protection:
IP45

Please Note: Double and Triple configurations cannot be wall mounted



Product Code: 902302T

Heat Map





SHADOW CARBON PANELS

Discover the next level of comfort with our Shadow Carbon Infrared Panel Heaters. Designed with cutting-edge infrared technology, these heaters provide an efficient, sustainable and aesthetically pleasing solution to keep your spaces warm and inviting. Whether you're looking to upgrade your buildings heating system or need an energy-efficient option for your space, our Shadow Carbon panels are the perfect choice.

SHADOW CARBON PANELS

Shadow Carbon Infrared Panel Heaters are designed to meet the needs of both residential and commercial users. Their innovative technology ensures a comfortable and consistent temperature, making them ideal for chancels, vestries, church offices and more. Plus, their silent operation provides a peaceful environment without the noise associated with traditional heating systems.

- 01 Energy Efficiency:** With Shadow Carbon, you'll enjoy significant energy savings. Our infrared heaters convert almost 100% of the electricity used into heat, making them one of the most efficient heating solutions available. This efficiency, combined with thermostat compatibility and overheating protection, allows you to maintain your ideal temperature while keeping energy costs low.
- 02 Stylish and Discreet Design:** These ultra-slim panels blend seamlessly into any interior design. Whether mounted on the wall or ceiling, their sleek white finish and minimalistic design complement both modern and traditional spaces. They are available in various sizes and powers to suit your specific needs.
- 03 Eco-Friendly Heating:** As a 100% electric heating solution, our infrared heating panels are a step towards a more sustainable future. They produce no emissions, helping you reduce your carbon footprint while maintaining a comfortable indoor environment. Perfect for those committed to green living, these heaters require no maintenance, offering a long-lasting and environmentally friendly heating option.
- 04 Versatile Installation Options:** Whether you need heating for vestries, church offices, chancels, or even entry ways, Shadow Carbon Infrared Panel Heaters provide flexible installation options. They can be easily mounted on walls or ceilings, making them suitable for any room layout and can even replace tiles in suspended ceilings.



**Shadow Carbon Infrared Heating Panel 350w**

Dimensions:
595 x 595 x 25

Weight (kg):
4.5

Total Power (kW):
0.35

Warranty (years):
10

Voltage (V):
220-240V/50Hz

Ingress Protection:
IP54

Product Code: 906454

**Shadow Carbon Infrared Heating Panel 450w**

Dimensions:
905x 705 x 25

Weight (kg):
5.2

Total Power (kW):
0.45

Warranty (years):
10

Voltage (V):
220-240V/50Hz

Ingress Protection:
IP54

Product Code: 906455

**Shadow Carbon Infrared Heating Panel 600w**

Dimensions:
605 x 1005 x 25

Weight (kg):
6.6

Total Power (kW):
0.60

Warranty (years):
10

Voltage (V):
220-240V/50Hz

Ingress Protection:
IP54

Product Code: 906456

Shadow Carbon Infrared Heating Panel 900w



| | |
|--------------------------------|-----------------------------|
| Dimensions: 755 x 1205 x 25 | Weight (kg): 10.3 |
| Total Power (kW): 0.90 | Warranty (years): 10 |
| Voltage (V): 220-240V/50Hz | Ingress Protection: IP54 |

Product Code: 906457

Shadow Carbon Infrared Heating Panel 1100w



| | |
|-------------------------------|-----------------------------|
| Dimensions: 905x 1205 x 25 | Weight (kg): 12.7 |
| Total Power (kW): 1.1 | Warranty (years): 10 |
| Voltage (V): 220-240V/50Hz | Ingress Protection: IP54 |

Product Code: 906458

FIND YOUR PERFECT PANEL SIZE



Unsure which heater you need? Our easy-to-use wattage calculator will help you find the ideal panel size based on your space and heating requirements. Just input your room dimensions, and we'll provide the perfect solution to keep you warm and comfortable.

SHADOW CONTROLLERS

Heritage Heating with Smart Control

All heaters in the Shadow Heritage range, including the Chandelier, Solace and Carbon panels, can be used alongside an intelligent control system. The system allows effortless adjustment of heating to optimise comfort and efficiency, helping to reduce energy use and support your journey towards net zero.



Zoning Control

Heaters can be controlled in zones, allowing different areas of the building to be heated independently. Only the spaces in use receive warmth, while unused areas remain unheated, massively reducing energy consumption and making the system both practical and efficient for heritage spaces.

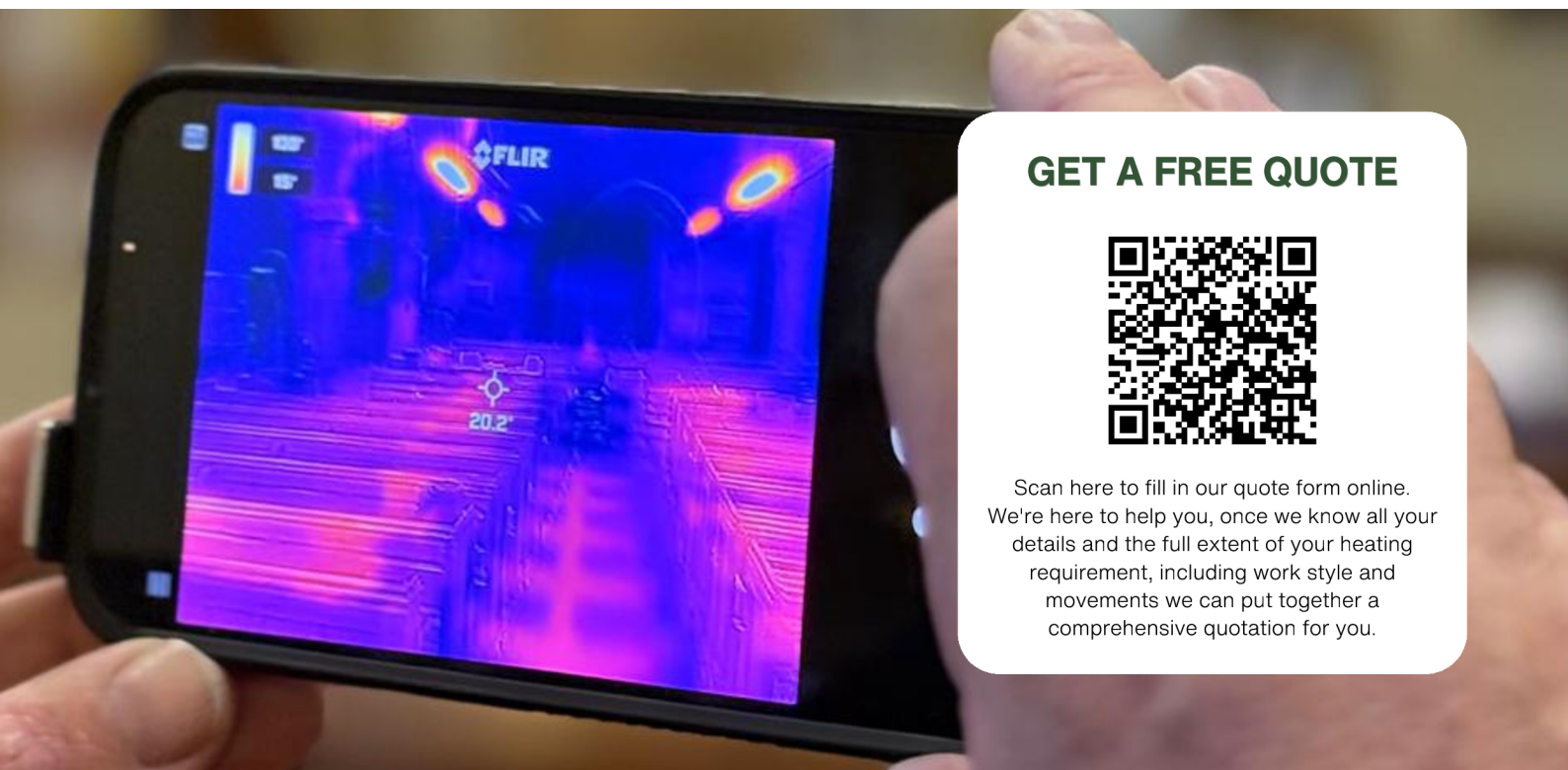


Push Button and Movement Sensor Activation

Heaters can be switched on with a simple push-button or by a PIR (movement sensor). This gives users complete control and makes it easy to provide warmth for specific events, services or gatherings without running the system continuously. The intuitive operation ensures that anyone can use the system without training, making it ideal for community and heritage buildings.



GET IN TOUCH



GET A FREE QUOTE



Scan here to fill in our quote form online. We're here to help you, once we know all your details and the full extent of your heating requirement, including work style and movements we can put together a comprehensive quotation for you.

Our UK based company has been designing and manufacturing innovative, market-leading heating solutions for more than 15 years. Shadow Industrial focuses on higher - ceilinged buildings where we can heat the whole or, specific areas within a larger space, providing businesses with cost-effective infrared heating solutions. When purchasing your heating solution from us:

- **Easy Installation.**
Use any qualified electrician with us on hand to help and advise.
- **Make the sustainable choice.**
Energy savings often over 90% and a significant reduction in emissions. .
- **Buy direct from the manufacturer.**
Fast turnaround times, 5 star service all hassle free.
- **Automatic 2-10 year warranty.**
Lifetime telephone support from our expert team.
- **Free Specifying Service.**
We will give you all the help you need to understand and purchase the perfect heating solution.

"Heater Haven"

From start to finish they gave me great advice on what type of heater would suit my needs. Would not hesitate to deal with again.

- Customer, Kevin Scott

"5 star service"

From start to finish the team couldn't be more helpful, I can't recommend the team highly enough.

- Customer, David Straker

"Perfect for heating solutions"

Delivery was excellent, they are very well built. They provide the perfect affordable heating solution, for large scale projects.

- Customer, CU.



DIOCESE OF GLOUCESTER



ROYAL AIR FORCE

NHS

Diocese of Portsmouth



SHADOW

Industrial Infrared

Contact Us

info@shadowindustrial.co.uk
(+44) 01279 466500

Shadow Industrial
Unit 9, Stort Valley Industrial Estate
Bishop's Stortford
CM23 2TU